

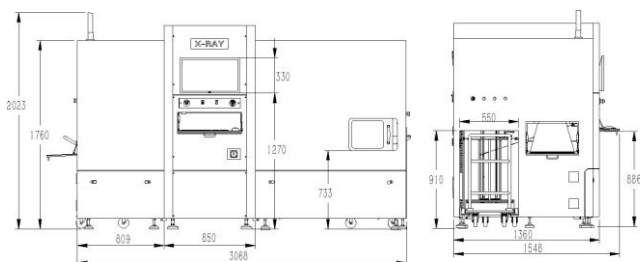
XC2000



Application Advantages

- ◆ Maximum 200 reels of materials can be loaded in a cycle.
- ◆ 31 mega pixel camera automatically scans for barcode information and label position.
- ◆ 8 ~ 12 seconds / reel counting speed.
- ◆ Automatic printing and labeling by TSC industrial printer.
- ◆ Docking with MES / ERP / WMS etc system for real-time data exchange.
- ◆ Intelligent operation, safe operation guaranteed.

Dimensions



Software Interface

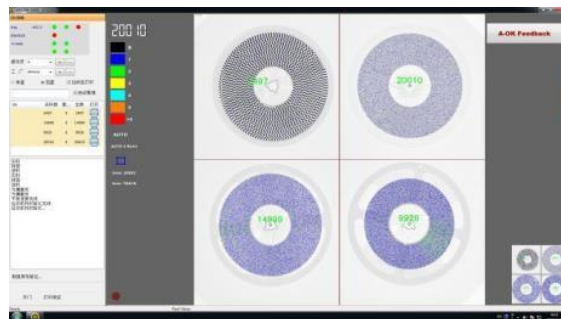


Image Data

We pay close attention to the global SMT electronic assembly industry, and collect the new component data, update and process the new component reels required by our customers every week, obtain images from the cloud and update the database every month. We have repeatedly tested more than 5000 kinds of devices with different materials, and the global coverage of devices is approximately 98.7%.

- ◆ The powerful database collects the image data of global counting systems, including more than 15 000 kinds of materials.
- ◆ Our database has 740 000 test images and 190 000 core images. Before each software update and release, all test image data is tested.
- ◆ Artificial intelligence is applied to counting, with automatic calculation, simple software and convenient operation, with little training costs.
- ◆ Splicing materials can be detected, including moisture-proof bags, bulk materials, JEDEC trays etc.

Application Cases

