

# LEX 2-LB

The LEX 2 LB is an advanced universal off-line precision micro-focus spot X-ray inspection device. Among its many features are high magnification, multiangle inspection, a large-area inspection platform, and real-time radiation situation monitoring equipment to guarantee both user and feature safety.

## FUNCTION OVERVIEW

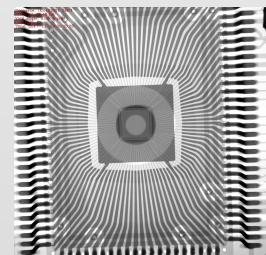
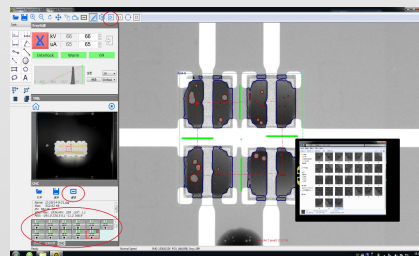
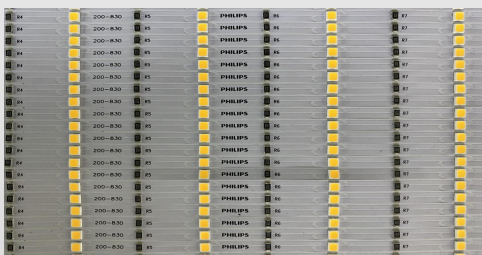
- Compatible with all functions of the LEX family.
- The X and Y axes of the stage are driven by high-precision screw rods to ensure detection accuracy.
- Automatic calibration function.
- Real-time monitoring of radiation value, multiple protection of operator's personal safety.
- Ergonomic one button automatic opening and closing of the movable door.
- Large testing platform to ensure a wider range of equipment testing sizes
- Safe and reliable fingerprint input access control.

## Operation

- Joystick, fingerprint, radiometer, T-axis tilt to enable image capture.
- Fingerprint: better restrict others from using the device without authority.
- Radiometer: monitor radiation levels in real time. Should they surpass predetermined limits, an alarm is activated.
- T-axis tilt photo detection: Use the increased tilt photo detection capability for particular inspections.

## CNC automatic running detection

- Depending on customer product specifications, the CNC multi-point automated detection can be executed by the LEX family.
- Set multi-point coordinates for automatic detection.
- Batch detection, report generation, and picture storage are all possible with an automated CNC running detection system.



### X-ray tube parameters

Tube type	Reflective Sealed Microfocus Ray Source
Tube voltage range	40-90KV or 40-130KV
Tube current range	10-200 μA/10-300 μA
Maximum output power	8 W/39W
Micro focus size	5~15μm or 2~15μm

### Flat panel detector parameters

Flat type	Amorphous Silicon Flat Panel Detector
Pixel matrix	1648×1648
Field of view	160mm×160mm
Resolution	5.1Lp/mm
Image frame rate (1×1)	30fps
AD conversion bits	16bits

### Equipment Specifications

Dimensions	L1380mm×W1390mm×H1930mm
Input power	220V 10A 50-60HZ
Maximum sample size	620mm×620mm
Control System	Industrial computer WIN7 (WIN10 optional 64bit)
Equipment net weight	About 1845Kg